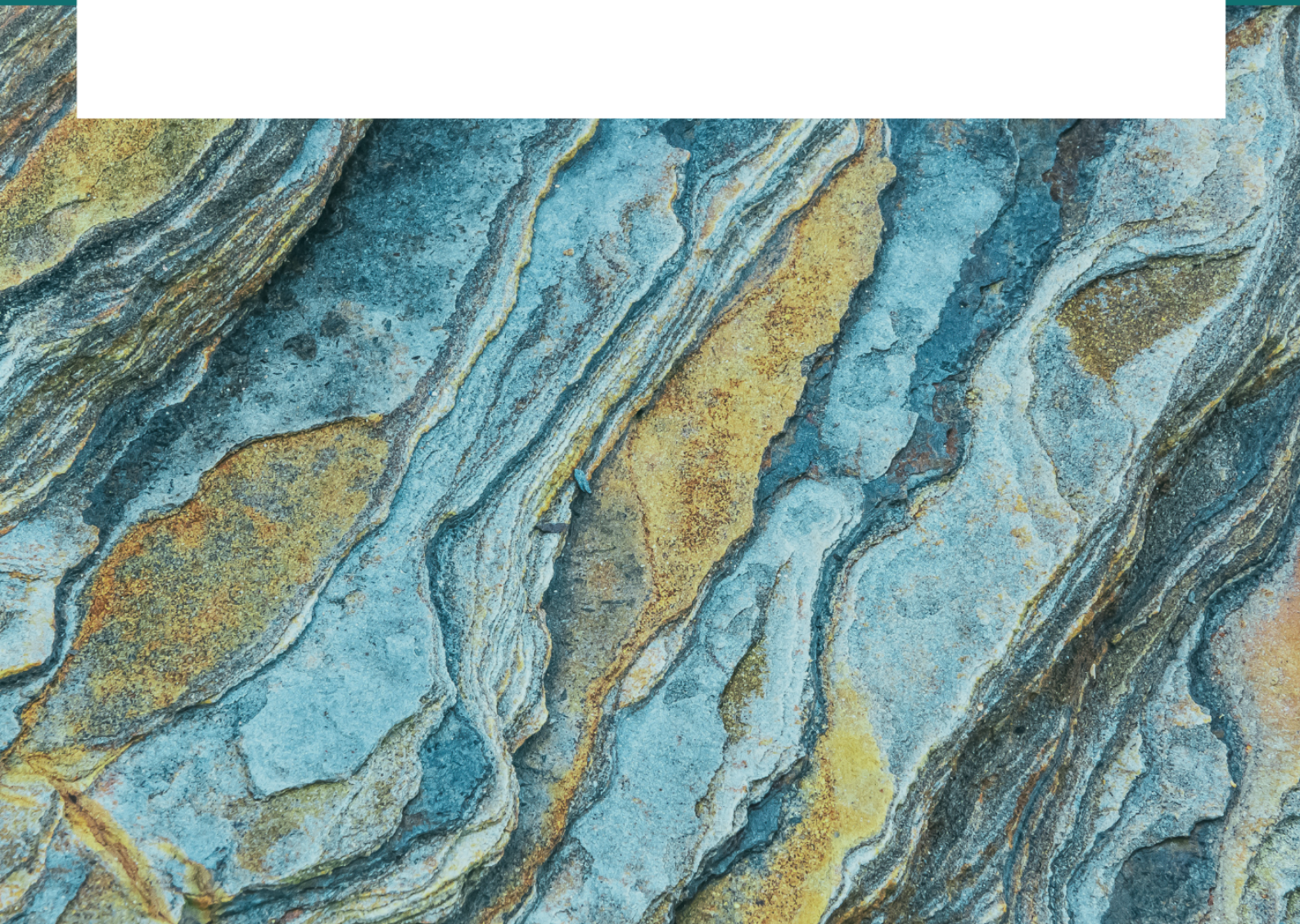


**Supervisor 9+**

# **Release Notes**



© Copyright 2025 Datamine Corporate Ltd

All Rights Reserved Confidential and Proprietary

Published: Thursday, 30 October 2025

The information contained in this documentation is subject to change without notice and is not warranted to be error-free. This documentation contains confidential information proprietary to Datamine Corporate Ltd which must not be disclosed, copied, or distributed to any third party without prior written consent of Datamine. Any unauthorised use or disclosure of this information would constitute a breach of confidentiality and would result in legal action.



# Contents

---

Overview .....	4
Further Information .....	4
Supervisor 9.2.1 Hot Fix Release Notes (October 2025) .....	5
Defect Fixes .....	5
Supervisor 9.2 Release Notes (October 2025) .....	6
New features & Improvements .....	6
Defect Fixes .....	14
Supervisor 9.1.1 Hot Fix Release Notes (July 2025) .....	16
Defect Fixes .....	16
Supervisor 9.1 Release Notes (May 2025) .....	17
New features & Improvements .....	17
Defect Fixes .....	23
Supervisor 9.0.4 Hot Fix Release Notes (October 2024) .....	28
Improvements .....	28
Defect Fixes .....	28
Supervisor 9.0.3 Release Notes (April 2024) .....	30
Upgrading a Version 8 project .....	31
Updating the License Manager .....	32
Changelog .....	33
Known Issues .....	35





# Overview

---

Supervisor is a powerful, user-friendly geostatistical suite that optimises resource estimation and enhances productivity for mineral resource geologists. Trusted by leading mining and consultancy companies worldwide, it offers advanced tools like variography, conditional simulation, and model validation, ensuring that mineral resources are calculated with maximum accuracy. Built by geologists for geologists, Supervisor streamlines complex geological tasks, saving valuable time and enabling efficient decision-making. Its intuitive interface and clearly presented data make it easy to model orebody characteristics from raw sample data, providing everything needed to optimise resource estimates and deliver high-quality, robust results.

## Further Information

This document includes cumulative release notes for Supervisor.

Release notes for other versions of Supervisor are available via the Support Portal <https://dataminesoftware.com/support/>.





# Supervisor 9.2.1 Hot Fix Release Notes (October 2025)

---

## Defect Fixes

- It was not possible to **import a numeric column from a DM/DMX file** as a string. You had to force importing as a numeric (double, int64, ...).
- An **error** was popped up when going to the **Point/Block Data Loaded Options**, in the **Rotate Data in 2D** tab. The error could be safely ignored though.
- The addition of a **Threshold** in a **Log Probability plot** returned an error. The component now works as before.
- In **Model Validation**:
  - **Histogram legend** now displays correctly the data and the mean used.
  - **GTC legend** is now linked with its property page.
- Loading a project with **Global Topcut** with **missing data** could send errors and it could even automatically remove the Global Topcut components from the datatree.
- Sometimes, an **error** appeared during the **reload the Conditional Simulation** default component when launching Supervisor.
- Since the 9.2 version, **components** in the tree were **not coloured** anymore if there were attached errors or warnings.
- Saved project with **Conditional Simulation** component will not throw an **error** about missing result files when updating Optimum DigLine or Grade Proba Cutoff components.
- Supervisor no longer crashes when the **MineTrust Connector** contains **invalid** server **settings**. Minor improvements were also made to **project synchronization** handling.
- The installer **incorrectly reinstalled .NET 9** Runtime even when it was already present. The detection logic has been fixed, and new CLI options were added to skip runtime installations if needed.



# Supervisor 9.2 Release Notes (October 2025)

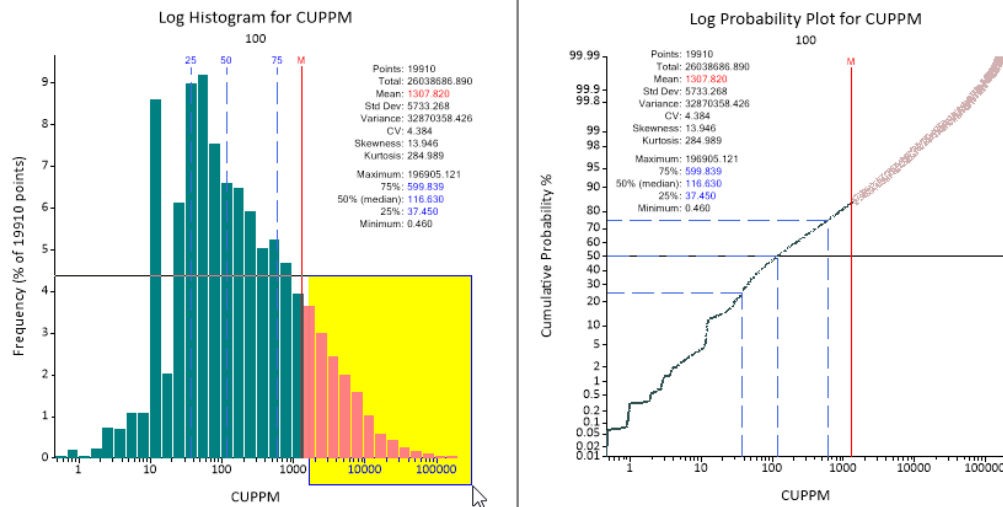
---

## New features & Improvements

- **Visualization improvements:**
  - **Graphics** in Supervisor are now **dynamically linked**, improving visual feedback and identification of outliers. When you highlight data in one component, the same data is automatically highlighted across all other components. Selections can be made in:
    - Histograms,
    - Scatter plots,
    - Probability plots,
    - Boxplots,
    - Hexbin plots,
    - Correlation matrix,
    - Cross validation,
    - 3D views.

Selected samples are displayed consistently across graphics using a contrasting highlight color (the opposite color using the RGB code).

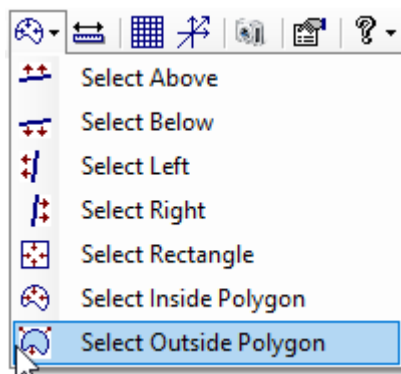




### Selection options:

- **Left click on data:** Create a new selection by clicking individual samples or drawing a rectangle.
- **SHIFT + Left click on data:** Add selected samples to the current selection.
- **CTRL+ Left click on data:** Toggle the selection status of the selected samples. If a sample was already selected, it is removed from the current selection. Conversely, if a sample was not selected, it is added to the current selection.
- **Left click outside of the data:** Remove selected samples from the current selection.

### 3D view selection modes (available from the 3D menubar):

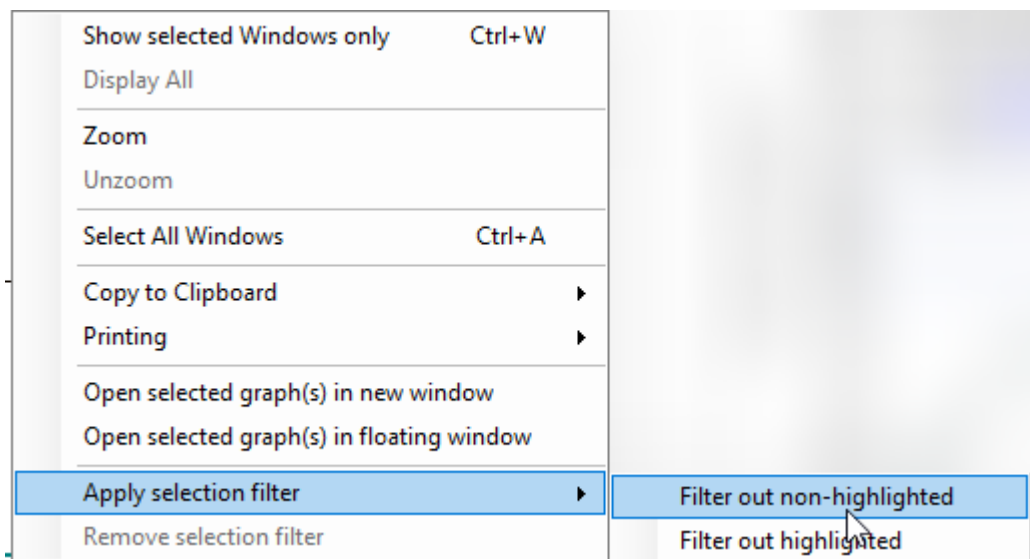




- **Select Above / Below / Left / Right:** Select samples on one side of a line. Just keep the left button of your mouse pressed and move your cursor to draw the line. Do another click to end up the line display and finally highlight the samples which are above / below / left / right to the segment.
- **Select Rectangle:** Select samples with a rectangle. Just keep the left button of your mouse pressed and move your cursor to draw the rectangle. Do another click to end up the rectangle display and finally highlight the samples which lie inside the rectangular selection.
- **Select Inside / Outside Polygon:** Select samples inside / outside a digitalized area. Just do a first click on the 3D view to start to draw your polygon and move your cursor to continue the display. Do another click to end up the polygon display and finally select the samples which lie inside /outside the polygon.

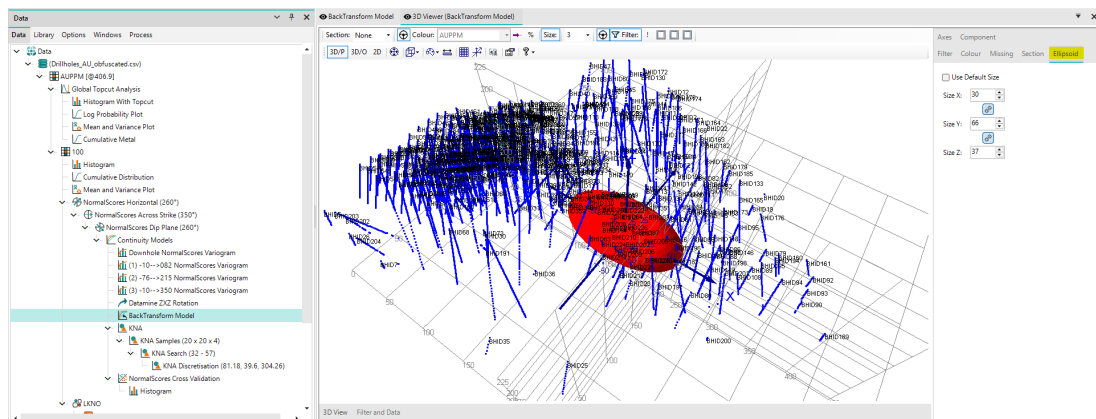
These 3D selection modes are compatible with the **SHIFT / CTRL shortcuts**.

Finally, a new right-click menu option allows you to apply the current selection (or its inverse) as a filter to your dataset.



- **Grade Tonnage curves from Conditional and Multivariate Simulations** can now be **overlaid** when using the option with multiple selections.
- A **legend** tab is now available in the properties of the following components:
  - Histogram of the cross validation,
  - Hexbin plot,

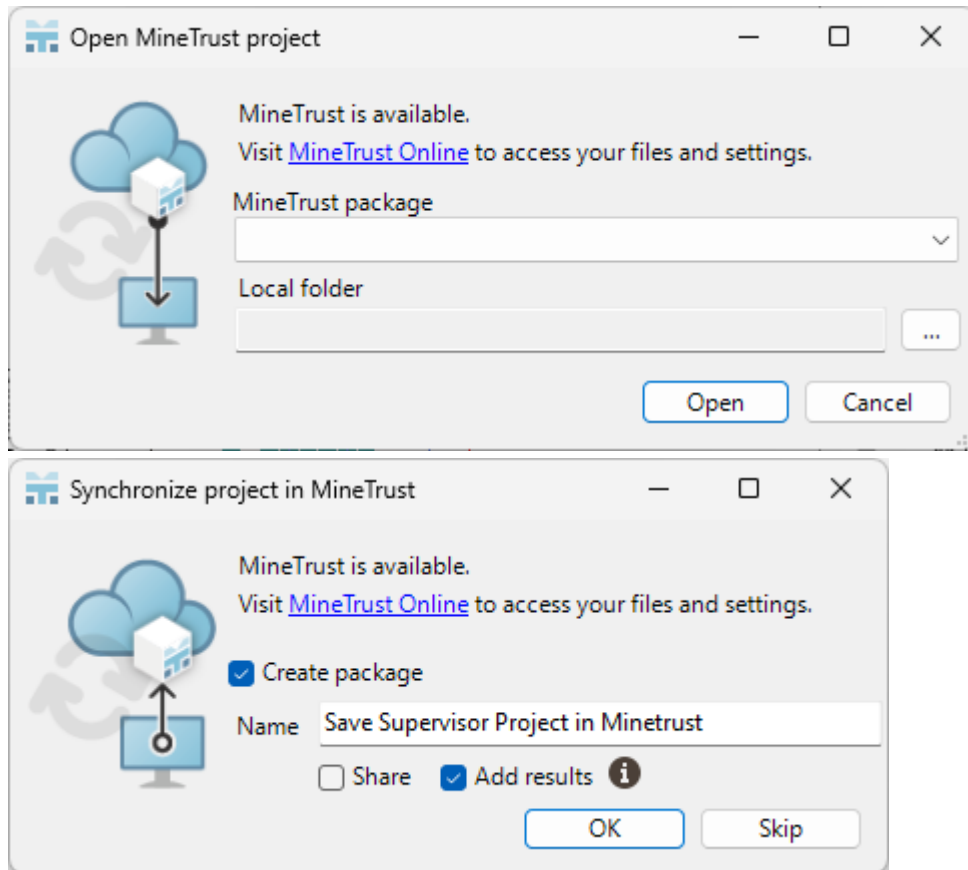
- Trend plot,
- Model validation (trend plots, histogram, probability plot and QQ plot).
- The **ellipsoid** associated with a **continuity model** is now **locked to the X/Y/Z axes in the 3D view**, preventing it from disappearing or getting out of sight when rotating or panning the view. In addition, the ellipsoid can now be **resized** through its properties: by default, its size is based on the variogram ranges, but it can be modified either proportionally to the original dimensions or independently along the X, Y, and Z directions. The ellipsoid is also now visible from the **Backtransformation** component.



- **Data exchanges:**
  - **Supervisor now supports Datamine's DMX format for import**, in addition to the .dm extension. With enhanced compression, full Unicode compatibility, and support for up to 2048 columns, this modern format is built to handle today's complex datasets, making your workflow more robust and scalable. The **performance** of the dm import has been optimized.
  - **MineTrust** is now integrated into Supervisor to allow sharing and synchronization of projects. With Supervisor 9.2, you can:
    - **Open MineTrust projects** that have been shared.
    - **Save your current project as a package** in MineTrust, provided the connection is available.

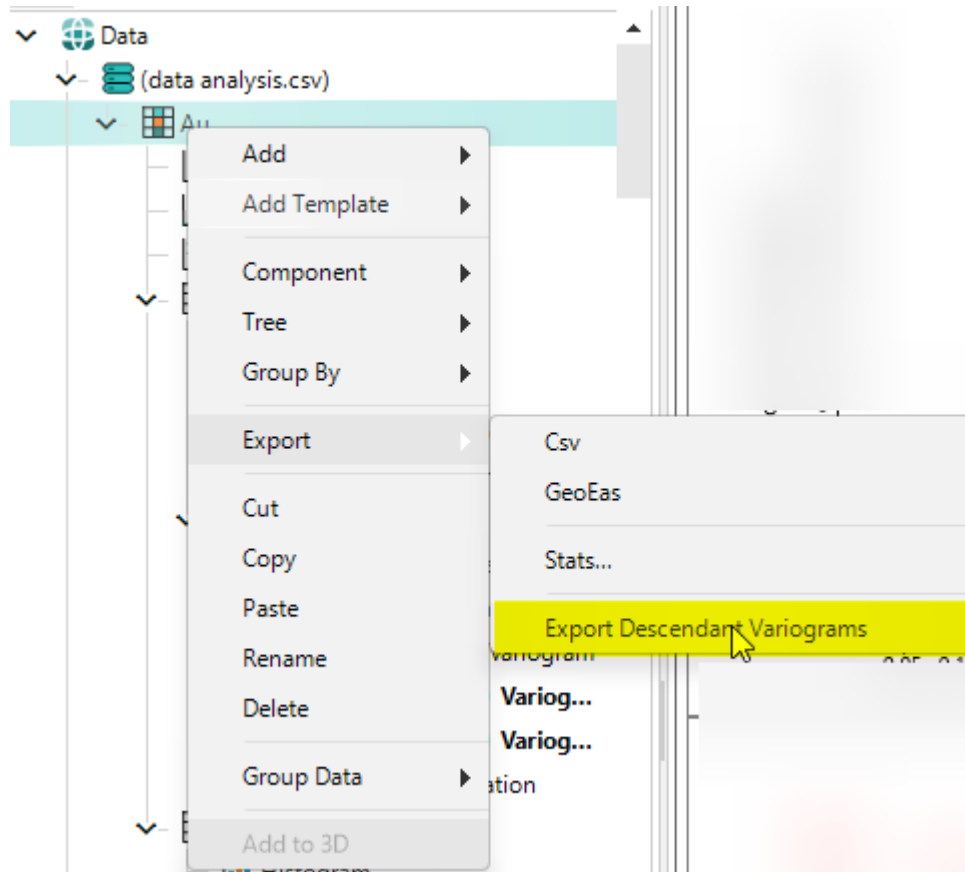
When creating a package, you can choose whether to share it with other users and whether to include the results folder. This makes it easier to distribute projects and outputs within your team.

The figures below illustrate the dialogs for opening a MineTrust project and synchronizing a project.

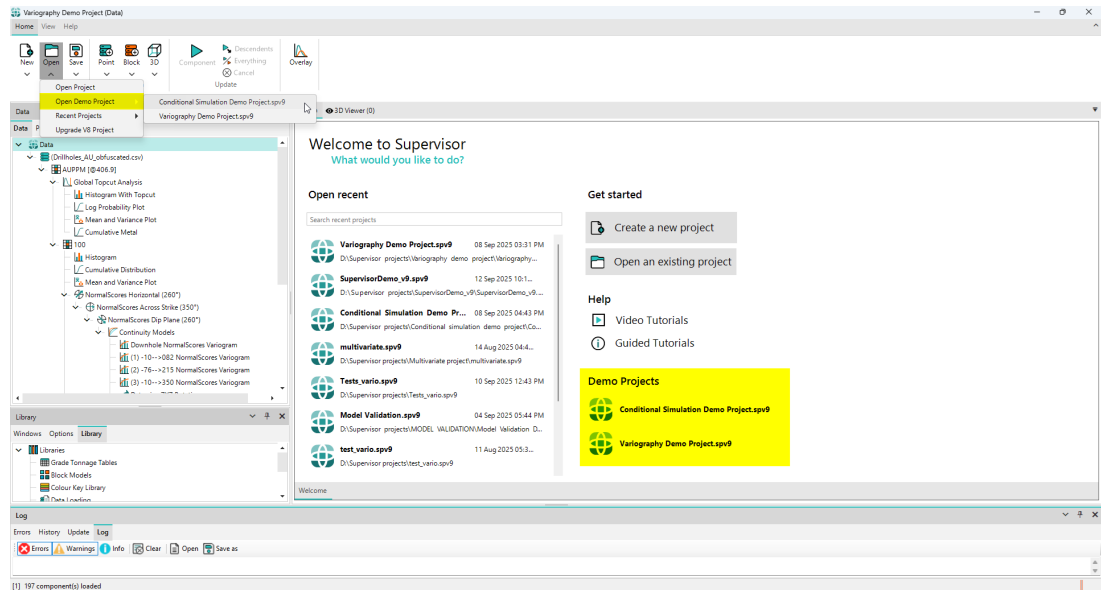


- A new right-click option allows you to **export all variograms at once**.
  - Exports the *back-transformed* variogram when data is transformed, or the raw *Continuity Model* variogram otherwise.
  - Results are combined into a single table, equivalent to exporting variograms individually.






- **Software architecture & Error tracking:**
  - **Demo projects** have been added to the software installer to help users get started more easily. These demos include two sample projects that correspond to the tutorials Global Topcut Analysis and Variography and Conditional Simulation. They can be accessed from a new Demo Projects section on the home page when the application starts, or from the Open / Open Demo Project menu.



- The underlying platform has been upgraded to **.NET 9**, ensuring ongoing Microsoft support, enhanced security, and improved reliability.
- The **Send Feedback** form has been enhanced by the addition of two new checkboxes. You can now choose to automatically attach the **latest error** message and/or the **log file** when submitting feedback, making it easier for us to diagnose and resolve issues quickly.



Send Feedback

 **Send Feedback**

Name

Email

Your feedback will be used to improve Supervisor. By including your email address, you agree that Datamine can email you about your feedback.

Describe what's happening

☐ Attach last error

☐ Include log file

Close

Send



## Defect Fixes

- The **Invert Model** box is now **automatically ticked** when **Correlogram** is selected in the **Draw** tab for continuity models, to avoid having to find and tick it manually.
- **Angles** using **Micromine** convention in the Rotation component are now normalized **between 0 and 360°**.
- The **Export** action is now available for **cross continuity models**.
- Adjusting the **Y-axis extent** in the **Log Probability** plot with **Gaussian** frequencies could previously break the display or make the plot unusable, especially when editing multiple graphics. The component now remains recoverable and behaves as expected when Y-axis limits are modified.
- **Nugget and sill values of back-transformed variograms** in Supervisor could differ between the user interface and the saved XML project, leading to **inconsistencies when importing into Studio RM** via the API. The values are now correctly saved and reloaded, keeping the interface and project file synchronised.
- Using the **Fill block size table** button in the **KNA** tool with certain configurations could cause Supervisor to freeze and display graphical issues. Changes have been made to improve stability, and this scenario should now behave correctly.
- In some graphics, **clicking the floating statistics table twice** without moving the mouse could cause **ghost mouse pointer** to remain permanently on the screen. No ghost lines appear anymore after interacting with the table.
- The **splash screen** previously appeared distorted or cropped when launching the application on certain displays, especially with non-standard scaling (e.g. 125%) or in virtual environments. The splash screen now maintains correct proportions based on the image size and is no longer resizable.
- Importing **DM files containing non-ASCII characters**, as Russian characters for example, previously failed due to encoding issues. The import process now uses UTF-8 for string columns, allowing Russian and other non-ASCII characters to be imported correctly.
- **Contact Analysis** could **disappear** from the project tree after reopening a saved project and navigating away from its view, making it unusable. Contact Analysis components are now correctly preserved and displayed.
- The **Merge domain** interface has been improved to allow the selection and the **toggleing of several checkboxes at once**.



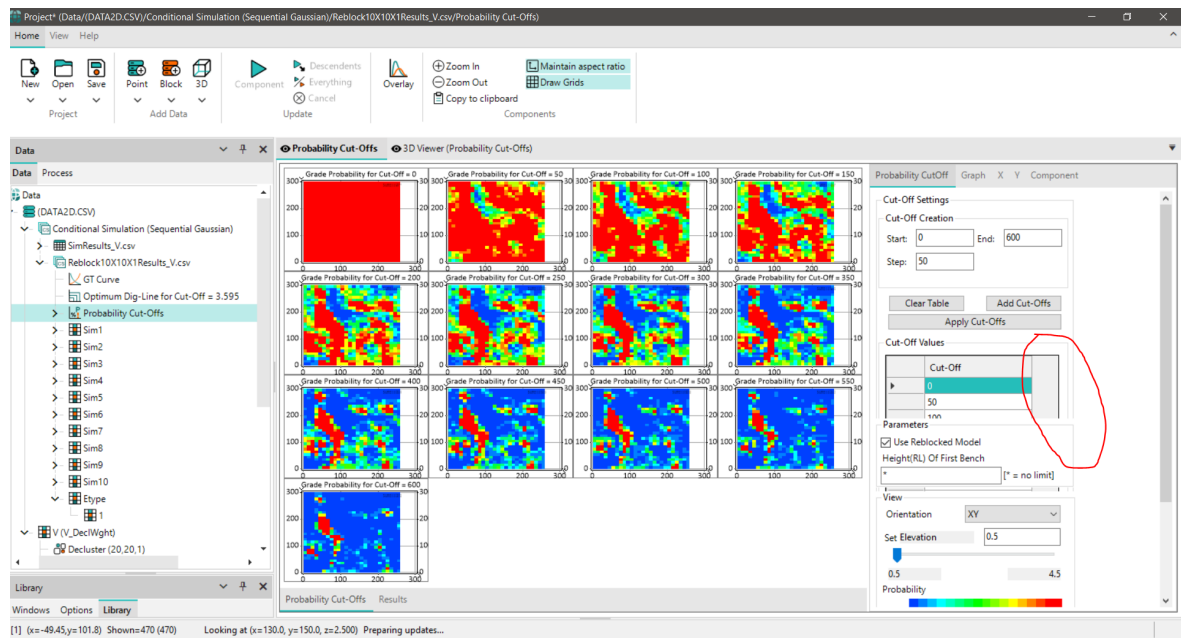
- When launching the application, the **interface** could previously appear **minimized or off-screen** if the display configuration had been changed. The software now checks the saved window layout, and if it is invalid for the current screen setup, a default position and size is used to ensure the window is visible and accessible.
- An **error** appeared when adding another component to a **Model Validation** component associated with **Multivariate Simulations**.
- When importing a **Datamine block model**, if the **file geometry** was **updated from the outside**, it was not correctly reloaded. You needed to click on Get dimensions in the Block Model tab before clicking on Reload data in the Loader part to see the modifications. The file is now correctly updated.
- In the **Continuity Models**, when displaying the **table of structures**, some of the components were still present after deselecting the table.
- When installing Supervisor, if you **unchecked the analytics statistics** (errors and usage), nothing happened when launching the software.
- The **message** displayed when **exporting multivariate simulations in a Datamine block model** is now consistent with the name of the button in the interface.
- If you used **Save as Default** on a **Contact Analysis** component, then trying to run Contact Analysis again failed.
- When selecting graphics to display them together (for example variograms) plus **Cross Validation and Histogram** with a Normal Score Transformation, the application required an update for the cross-validation last items while it should not.
- In the **Correlation Matrix**, when applying a **transformation**, the cross plots didn't update and an **error** could happen when clicking **Update: "Error: Index was outside the bounds of the array. Error while drawing"**. An image has also been added in the empty area, to make it easier to understand that one or more cells of the correlation matrix must be selected in order to display the corresponding scatter plots.
- When using a right click on a component in the **Data Tree**, some **options in the menu** have disappeared between the v8 and v9 versions. In particular, it was not possible to Save children components as a Template, but also options to select portions of the tree. All the options are now available again.
- When **upgrading a project from V8**, if the project did contain **continuity fans**, the items have to be updated or an error would occur.



# Supervisor 9.1.1 Hot Fix Release Notes (July 2025)

## Defect Fixes

- A crash or an error could occur **when closing a project**.
- Several **installer issues** have been fixed:
  - **DmFile.dll** was not registered correctly,
  - Too recent DLLs already present in the installation directory were not overwritten.
- When using **2D data** files, the **reload of associated output block models** (KNA, LKNO, conditional simulations), in 2D too, failed because of their flat dimension (dz=0).
- A first correction has been made in 9.1 to avoid the issue that prevented users from **scrolling to the bottom of the Project tree**. Another correction is provided with this version as the problem was persistent.
- Since the 9.1 version, some **table's scrollbars** on property panels have disappeared.



- The **2D rotation** associated with a **Datamine block model** was not correctly detected by the import (in the Rotate Data in 2D tab) if the two ROTAXIS2 and ROTAXIS3 columns were not equal respectively to 2 and 1. The content of these columns is now ignored.



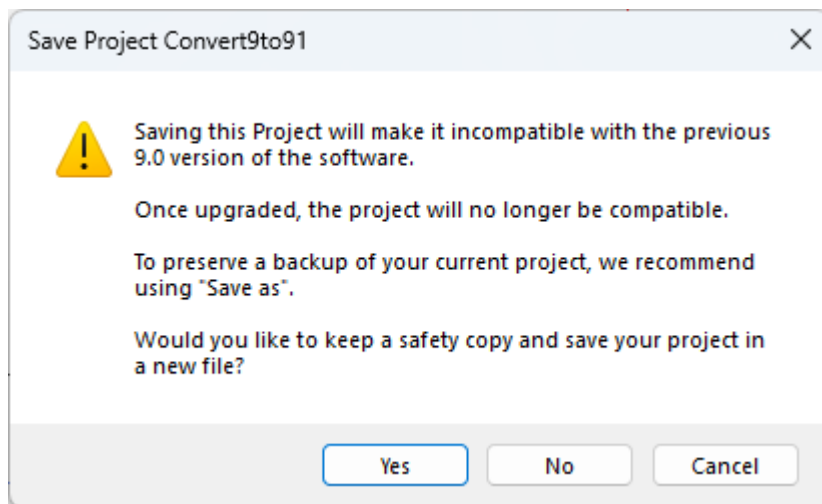


# Supervisor 9.1 Release Notes (May 2025)

---

## New features & Improvements

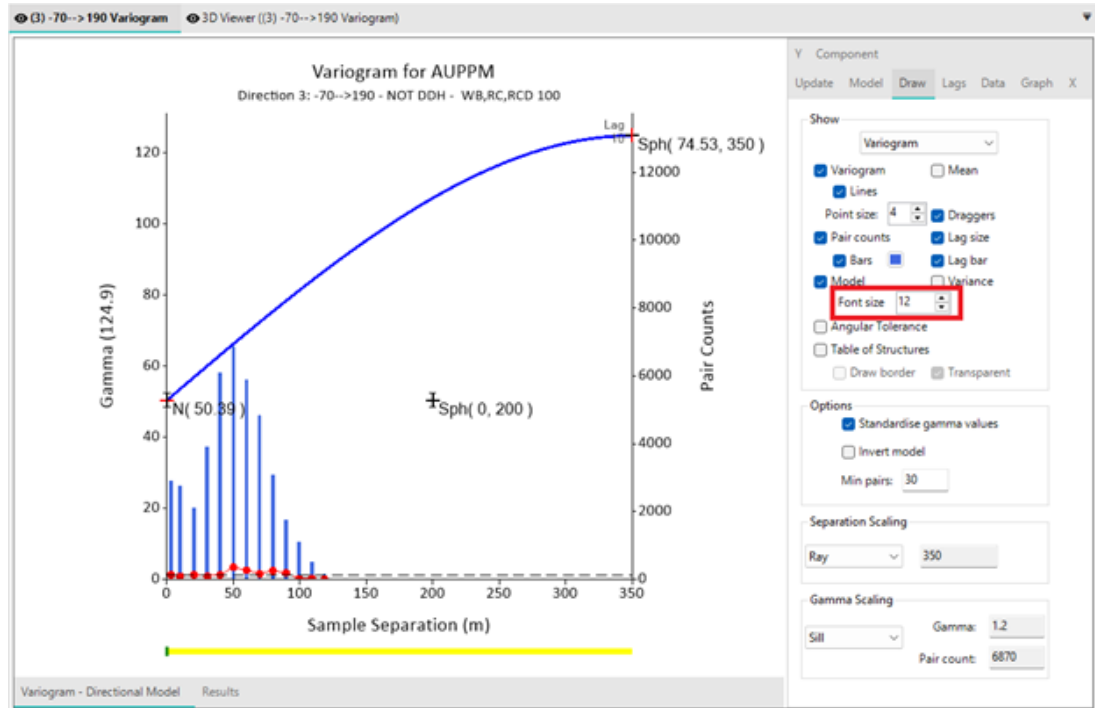
- **Installation & project upgrade:**
  - **DirectX** redistributables are now embedded in the installation. The installation of DirectX 9 runtime is no more required.
  - The **default installation folder** has been changed to **C:\Program Files\Datamine\Supervisor**. This modification is applied for a new installation. When upgrading from the previous version, the folder remains C:\Program Files\Snowden\Snowden Supervisor v9.0.
  - The **splash screen** visible when launching Supervisor 9.1, as well as the application icon, have been updated according to the new Datamine branding.
  - A message is popped up when asking to **save a 9.0 project in 9.1**, as it will make the **project incompatible**. To help you manage backward compatibility, we recommend to save your project in a new file. This creates an upgraded version of the original project, keeping a safety copy of the previous version intact.



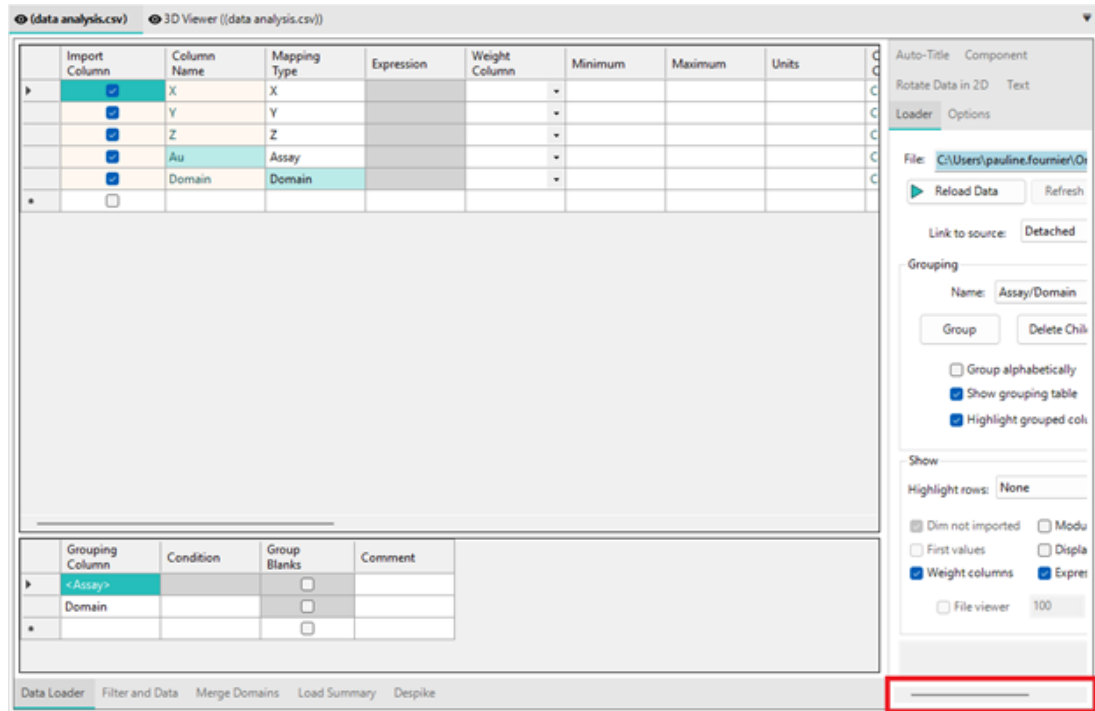
- **Help:** The **email box** in the **user feedback** form (reachable under the Help menu) was previously mandatory. You can now optionally provide us with contact details so that we can discuss your feedback and ideas with you directly.
- **Variography improvements:**



- As Leapfrog no longer has any restrictions on the number of allowable structures for variogram models, the **2-structure restriction has been removed from the export** functionality when using the **Leapfrog compatibility** mode (\*.lfv). The restriction is still present when exporting in a \*.xml file but it is not limited anymore to the spheroidal structure only.
- The **font size** of the **variogram model structures** displayed next to the different draggers can now be changed in the Draw tab.

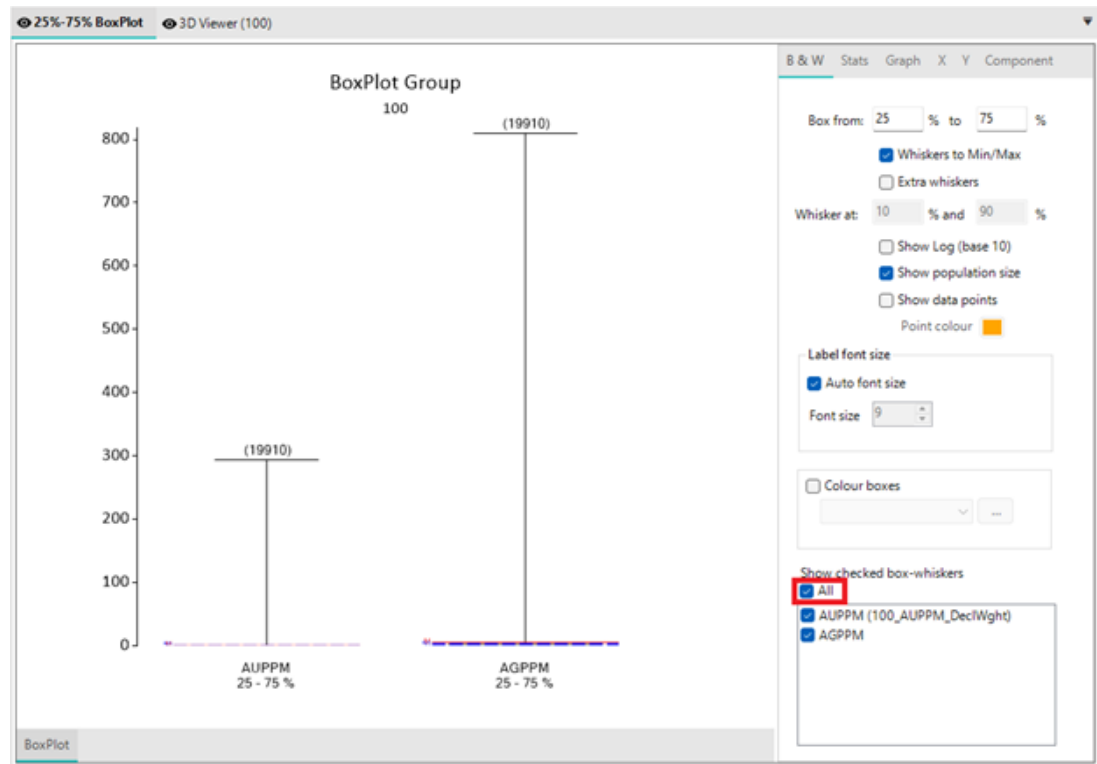


- **UX improvements:**
  - A **scroll bar** has been added in the **Data Loader** property panel.



- When using the **boxplots**, if you wanted to select only few items, you had to untick all the others. This could be painful if you had lots of items in the list. An '**All**' **checkbox** has been added to the boxplot selection

select/unselect all checkboxes at once.



- **Rotations:**

- A new **Rotate Data in 2D** tab is available in the property panel of the **Data Loader** to deal with 2D rotation in Datamine block models. When importing rotated Datamine block models, Supervisor imports the XC, YC, ZC columns which are local rotated world coordinates. By consequence, block model data cannot be compared to data located in real world, like drillhole data for example and then apply a model validation or KNA.

Clicking on the grid loader, angle and X/Y/Z translation fields show you if the original file was rotated or not. They specify which transformations should be applied to convert any data in the real coordinate system into the local coordinate system.

The screenshot shows the 'Rotate Data in 2D' settings panel. At the top, there are tabs: 'Loader', 'Auto-Title', and 'Component'. Below these are 'Block Model', 'Options', and the active 'Rotate Data in 2D' tab. The panel contains the following sections:

- Get transformation settings by selecting a data loader:** A text input field with a dropdown arrow.
- Enable 2D Rotation:** A checked checkbox.
- Pre-Rotation Translation:** A table with three rows: X: -1000, Y: -1500, and Z: -2000.
- Rotation:** A table with one row: Angle: 20.
- Post-Rotation Translation:** A table with three rows: X: 0, Y: 0, and Y: 0.

Pre-Rotation Translation	
X:	-1000
Y:	-1500
Z:	-2000

Rotation	
Angle:	20

Post-Rotation Translation	
X:	0
Y:	0
Y:	0

When reaching the properties of your drillhole data, by selecting your block model in the **Get transformation settings by selecting a data loader** field, you will automatically define the angle and the translation along X, Y and Z to apply to your drillholes to be in the same local coordinates as your block model.

Auto-Title   Component

Loader   Options   **Rotate Data in 2D**

Get transformation settings by selecting a data loader

Data/simple\_rot\_grid.dm ...

☒ Enable 2D Rotation

Pre-Rotation Translation

X: -1000

Y: -1500

Z: -2000

Rotation

Angle: 20

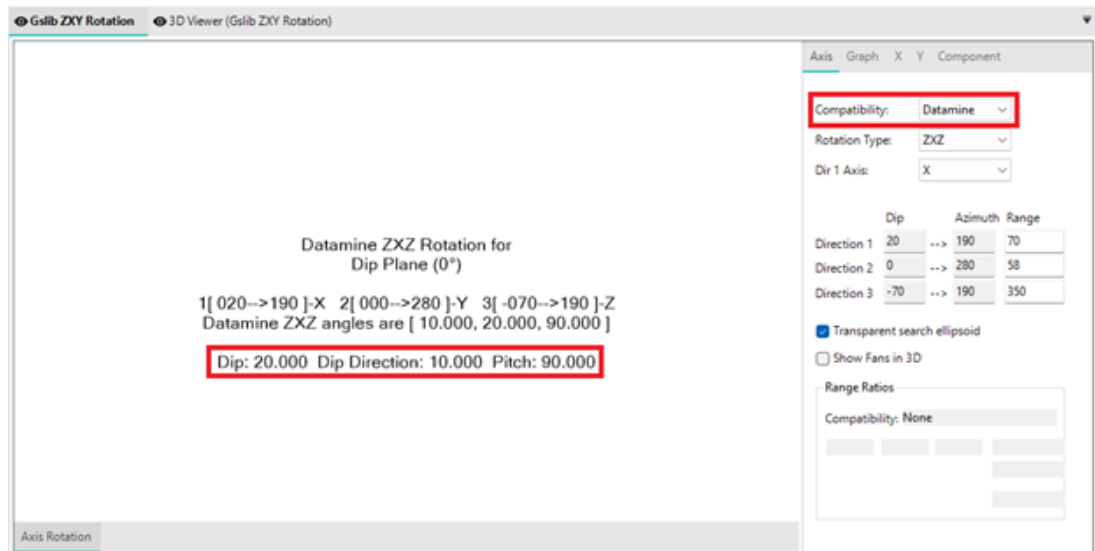
Post-Rotation Translation

X: 0

Y: 0

Y: 0

- In the **Continuity Models**, **Datamine** compatibility output has been modified to be the same as Leapfrog. You have now an additional text with Dip, Dip Direction, Pitch.

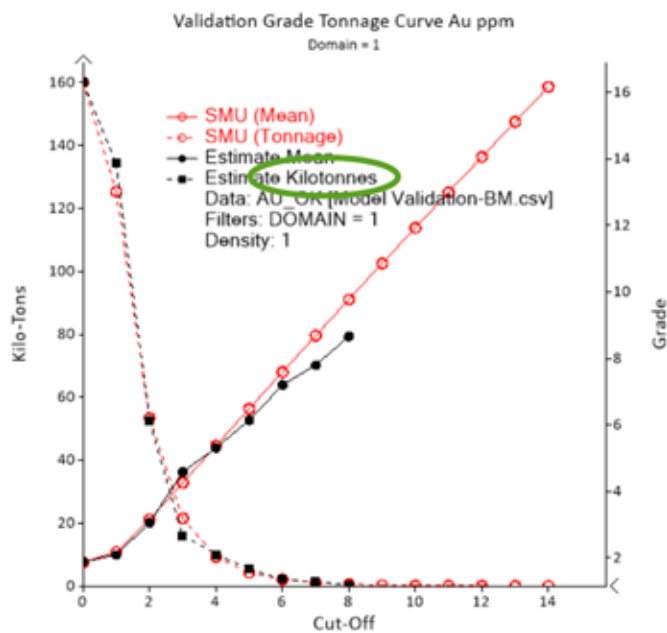


- **Other:** An error message has been added if you try to import **.dmx** files. This new Datamine format is not yet supported but it will be available in the 9.2 version.



## Defect Fixes

- In the **GT Curve**, when unticking the Auto-title and modifying the title in the properties panel, the axis label was correctly set but the associated **legend** remained unchanged.



Block Data Component

GT Curve GCoS Draw Graph X Y

Kilo-Tons Grade

☐ Auto title

Y Title: Kilo-Tons

Y Thumbnail: Kilo-Tons

☐ Log scale ☐ Draw grid

Y Ticks

☒ Auto tick

Min: 0

Interval: 20

Y Min/Max

☐ Auto min/max

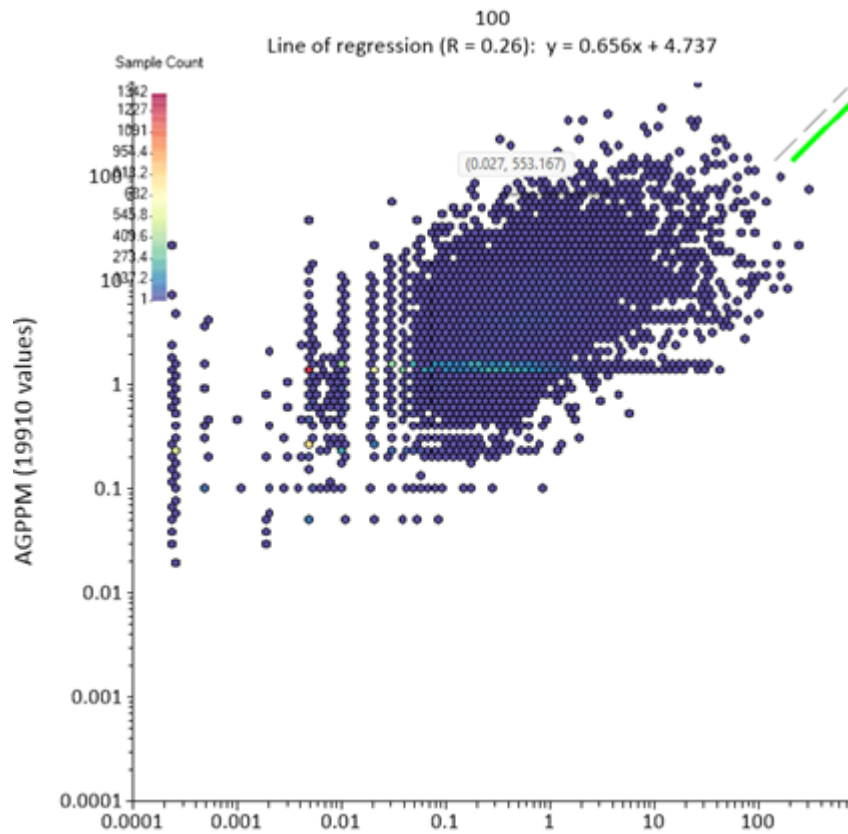
Min: 0

Max: 166.2

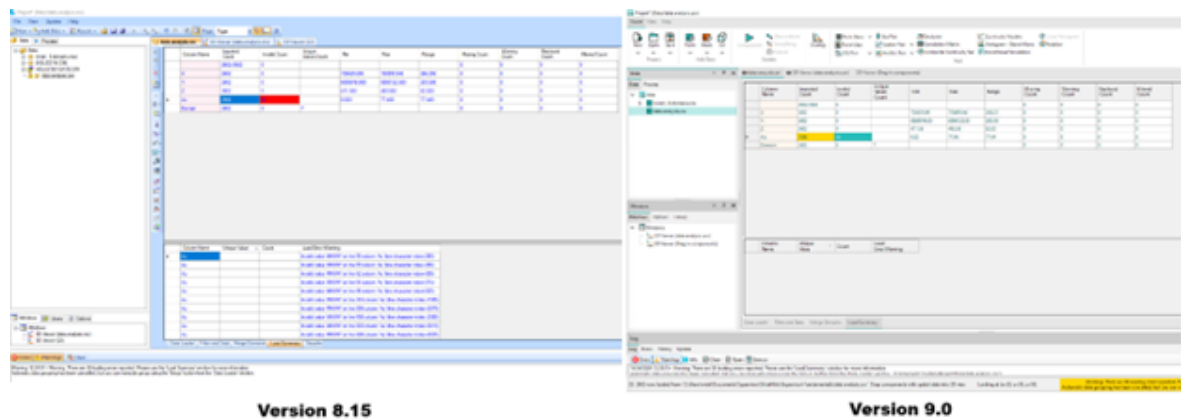
Y Annotate

Draw: Left ☒ Horiz

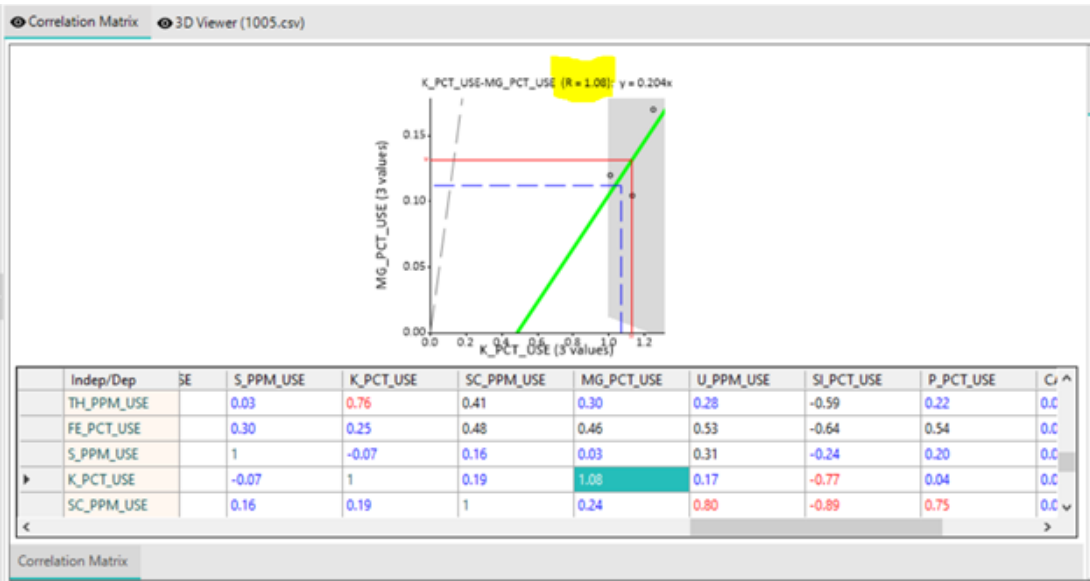
- In the **HexBin plot**, the **line of regression** and the first bisector line were obscured by the hex elements when applied on the **Log10** transformation. Both lines are now displayed as foreground.



- The **Load Summary** did not **report the warnings/errors** anymore. The area, below the load table, was empty.



- The **copy-paste** between projects, broken in version 9, has been corrected.
- Contextual Help** (F1) in version 9 did not open the correct page like it did in version 8.15. Also the documentation file as well as release notes PDF document were outdated in the installation.
- In the **Correlation Matrix** :
  - Correlation coefficients displayed were wrong when applying a **filter** on the samples. This could lead to values greater than 1 or smaller than -1.



- Changing the number of **decimals** to add more precision did not work properly. The displayed number of decimals was correct, but the extra decimals displayed 0 instead of the right value. Trigger an update of the component solved the issue.

	Indep/Dep	AUPPM	AGPPM	CUPPM
▶	AUPPM	1	0.26000	0.29000
	AGPPM	0.26000	1	0.65000
	CUPPM	0.29000	0.65000	1

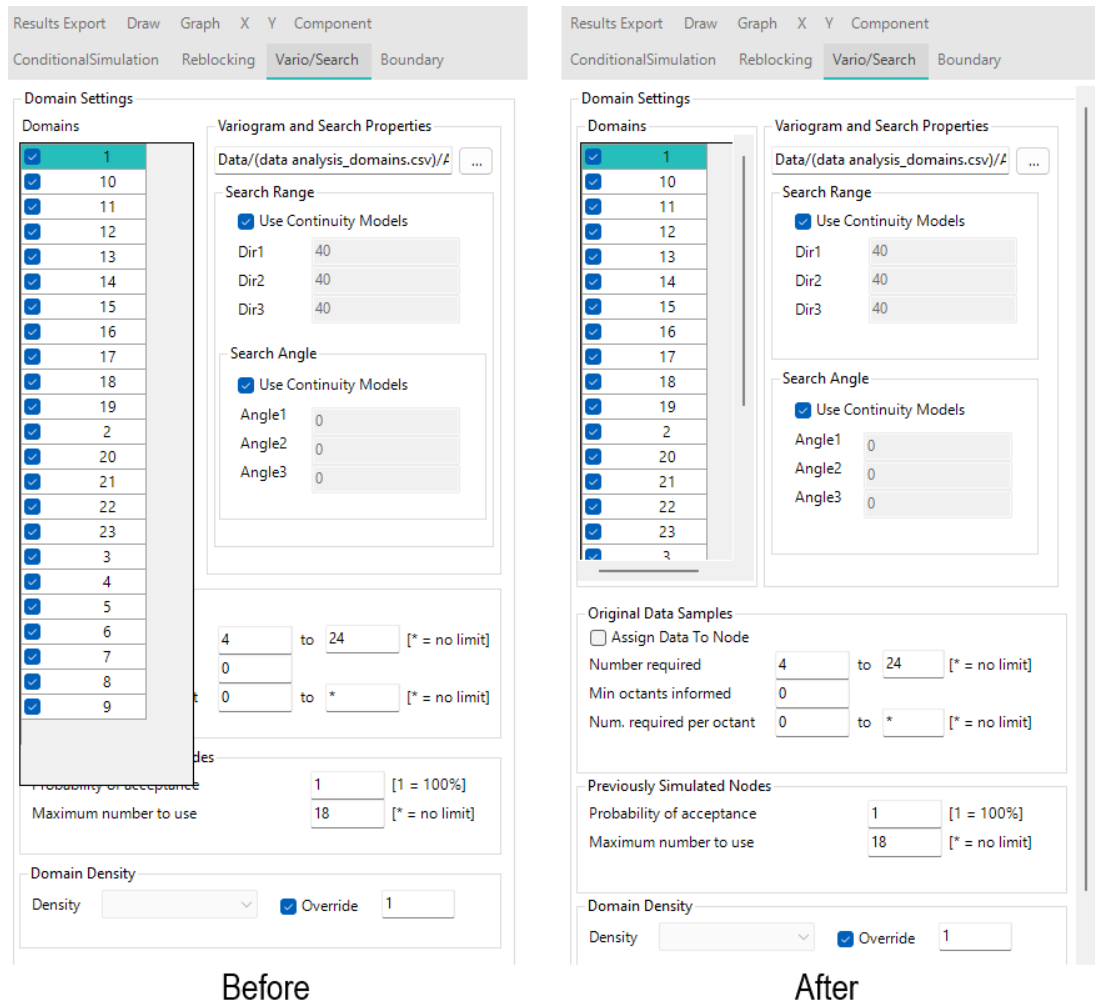
Wrong behaviour in 9.0

	Indep/Dep	AUPPM	AGPPM	CUPPM
▶	AUPPM	1	0.25949	0.29236
	AGPPM	0.25949	1	0.65212
	CUPPM	0.29236	0.65212	1

After correction in 9.1

- In the **Vario/Search** tab of the **Conditional Simulation** properties,
  - when dealing with lots of **domains**, the list could overlay the bottom of the interface and some parameters. A **scroll bar** has been added to avoid this problem.





- **Improved error message for missing simulation domains:** If you select a **domain** to simulate that **isn't present** in the output node grid or point set, you will no longer encounter the generic **"Index was outside the bounds of the array"** error. Instead, you'll see a clear message explaining that the chosen domain could not be found in the output data.
- An error occurred when **updating a V8 project with a detached data source**.
- In the **KNA**, the **block sizes** defined using the **Library** were not taken into account correctly.
- Multiple **Grade Tonnage Curves**, built from Block Models, can now be overlaid using the **Overlay** option. Only the colours of the first selected item are kept. The others are randomly redefined.
- An error occurred when importing a **Vulcan Bmf** file because of a missing library.
- The **SQL Data Loader** did not work. You could enter the server name, but all the other fields remained disabled.
- Several bugs linked to the **Weight** column have been corrected:



- The **block data loader** stored default weighting entries, which caused an error when the weight column was unavailable during **reload**.
- When importing **sub-blocks** contained in a **Datamine** file, a weight column **XINC\*YINC\*ZINC** is now created by default and is applied to all Assay columns.



# Supervisor 9.0.4 Hot Fix Release Notes (October 2024)

## Improvements

We've released a patch update for the .NET dependency integrated within Supervisor. This update includes key performance improvements, security patches, and critical bug fixes to enhance the stability and reliability of Supervisor.

## Defect Fixes

- An issue has been fixed that prevented users from scrolling to the bottom of the Project Tree.
- An issue has been fixed that caused variogram fans to sometimes be blank.

**Important:** You will need to reprocess any variograms created in Supervisor 9.0.3 for this fix to be applied. To do this, open the affected variogram and uncheck the **Analyse** checkbox in the **Update** tab of the **Property Panel**, then re-check the **Analyse** checkbox and click the **Update** button. This will cause the variogram to reprocess without making any changes to your data. The reprocessed variogram should display the normal contours.

- Multivariate Simulation decorrelation techniques now produce appropriate scatter plot results
- Process cannot access file - error during conditional simulation
- An issue has been fixed that prevented the default histogram, probability plot, and mean and variance plot from displaying beneath newly loaded assays and domains.

**Important:** To correct this issue, you may need to reset the **Library Tab** of the **Component Options** by clicking the **Reset Layout** button in the **View** tab of the **Ribbon Menu**, then closing and reopening Supervisor. After reopening Supervisor, the **Library Tab** may need to be docked to the **Component Options** window.

- An issue has been fixed that prevented the default histogram, probability plot, and mean and variance plot from displaying beneath newly loaded assays and domains.



- An issue has been fixed that prevented the Colour Key Library from loading in new projects.
- The Multivariate Simulation component no longer produces an error when the compositional transformation is used with a filler.
- An issue has been fixed where loading a project with a probability cutoff component as part of a multivariate simulation would cause an error.



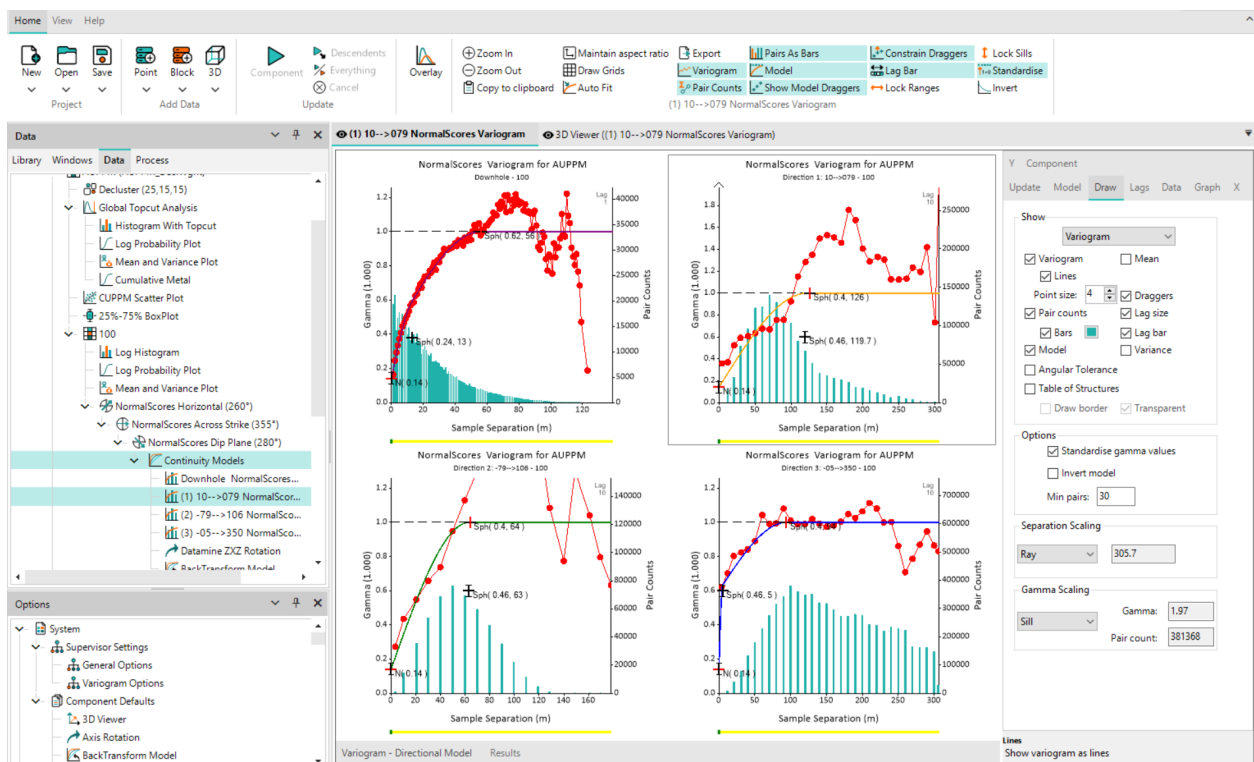


# Supervisor 9.0.3 Release Notes (April 2024)

Supervisor Version 9 brings a long-deserved and significant technology upgrade to the base platform that will allow us to continue to support and develop Supervisor well into the future. While there are some changes to the overall look, Version 9 remains an evolution of the previous version with no reduced functionality or changes to the core workflow. Ultimately, while we have modernised Supervisor, it is not a new product and therefore is accessible by anyone with a current active maintained license, subscription or rental.

Aside from the modernised user interface, users can enjoy the convenience of the new ribbon menu and utilise greater customisation new dockable windows, alongside a number of small quality of life changes. We are looking forward to your feedback which can now be provided directly from within Supervisor itself with the new 'Send Feedback' form under the Help menu. Through this form, you can optionally provide us with contact details so that we can discuss your feedback and ideas with you directly.

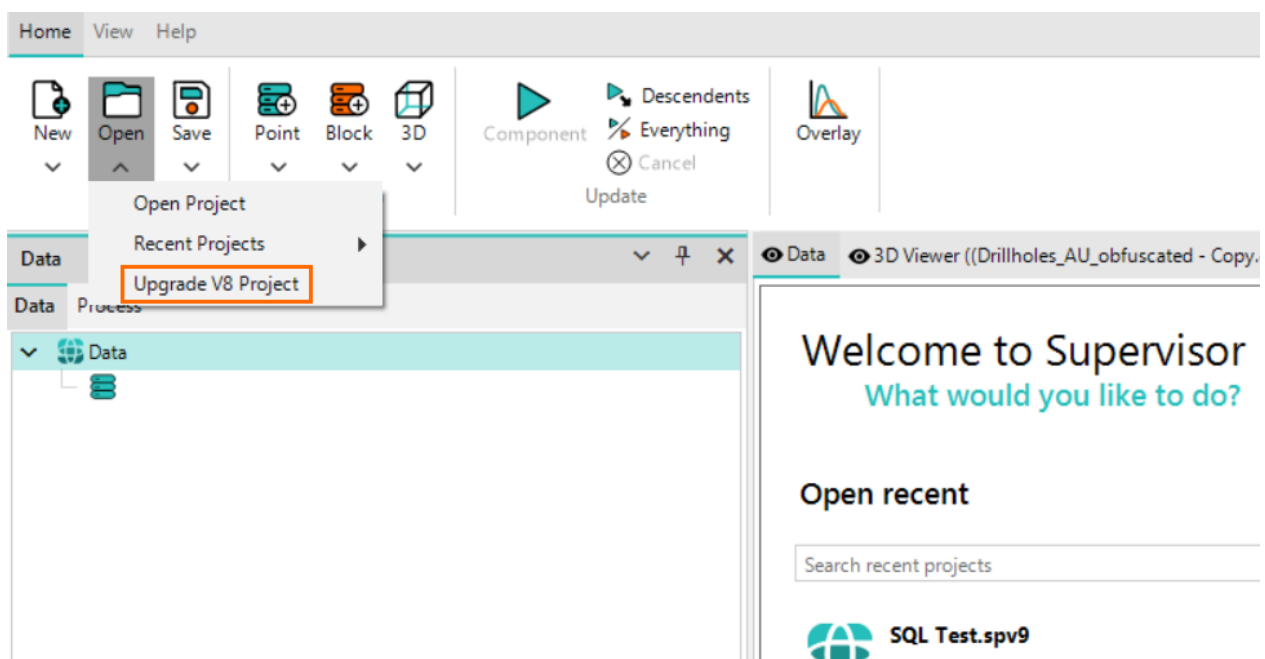
We hope that you enjoy the new Supervisor experience and look forward to continuously improving our solutions into the future.



# Upgrading a Version 8 project

Upgrading your Supervisor projects from version 8 to version 9 is a straightforward process. Launch the Supervisor 9 application and select the 'Upgrade V8 Project' option from the **Open** menu. Select the version 8 project you wish to upgrade, and the application will create a duplicate of this project in version 9 format.

Please be patient as the creation process may take some time. Once the new project is created, it will need to be updated for the results to be regenerated. It's important to note that once a project is upgraded to version 9, it cannot be reverted back to version 8. Make sure you are ready to upgrade before proceeding.



## Updating the License Manager

To ensure there is no disruption to the ongoing experience using Supervisor, a change has been rolled out to all existing license holders which converts current Version 8 licenses to a bundled solution. Each bundle contains two licenses, one that supports version 8 installations and one that will support all versions from 9 onwards.

The Version 9 installer comes bundled with version 6.2 of the Datamine License Manager, which should ensure that it correctly detects the new license types and structure. For any issues, please reach out to Datamine support for further assistance and troubleshooting.

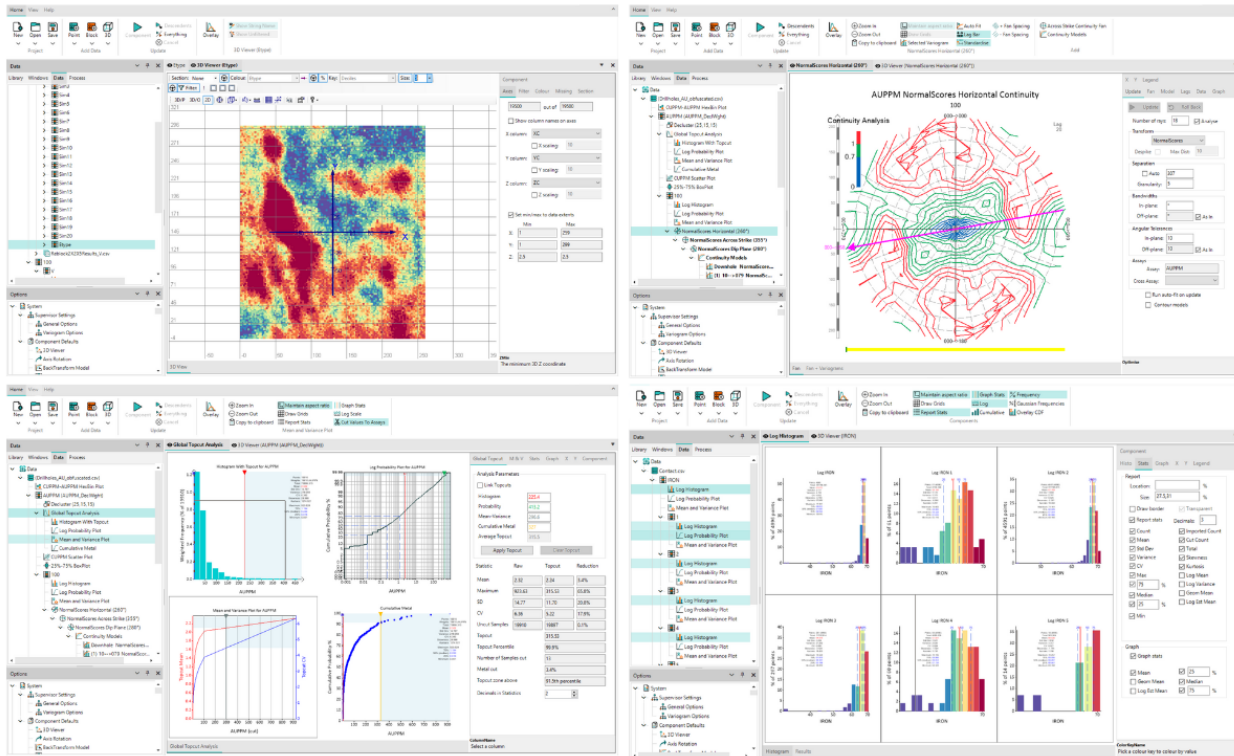


# Changelog

- Improved the error message associated with trying to add a component to the Process Tree when no data is loaded.
- Removed the button link to the online LKNO video from the Property Panel.
- Fixed the resolution of vertical text to be easier to read.
- Fixed an issue that prevented interaction with the floating stats table in new components.
- Corrected the outputs for Leapfrog which could be incorrect in some situations.
- Reduced the number of decimal points for the Leapfrog conversion to enhance readability.
- The UI has been replaced with a new platform and all components have been updated to function as in version 8.
- The Histogram property panel has been redesigned.
- A Ribbon menu has been added which has all the previous functionality of the old menus and vertical toolbar.
- An error capturing tool has been added, which can automatically and anonymously report software errors to the Supervisor team for early correction.
- Updated the .NET platform to version 6 and updated every component to be compatible with this version.
- Updated Supervisor branding with latest logos and colour schemes.
- The about popup is more informative.
- Added a new Welcome page to the Data Tree root node.
- Updated several aspects of the Tree and Windows to allow greater user customisation.
- Anonymous usage data may now be optionally provided to the Supervisor team to help identify high-use components for improvements.
- Several default colour schemes have been updated.
- Updated coloured text in the Data Loader data tables from blue to teal.
- Modified the 'ABORT UPDATING' text on the main canvas to 'UPDATING'.
- Several components in the Options tree have been renamed to be related to their actual options.



- Several Library components have had their names updated to relate to their function.
- The version number has been added to the startup splash screen.
- Updated the default colours for the Histogram and several percentile colour keys.
- Updated splash and install wizard images.



## Known Issues

Known issues are non-critical bugs that are currently being developed, but were not able to be included in this release. All known issues will be resolved in the next minor release.

- When selecting multiple components, the first selected component cannot be deselected from the group.
- The line of regression on Hexbin plots is obscured by the hex elements.
- Editing multiple thresholds at a single time can cause an error.
- Changing the Y-axis label in the GT Curve component does not update the legend label.
- The Load Summary does not provide detail for each encountered loading error.
- The Cut-Off Value table in the Grade Tonnage Curve component for block models does not create a scrollable element. Workaround: The list of cutoffs can be created in an excel spreadsheet and pasted into the Cut-Off Values table.





Datamine enables efficient and sustainable mining through the application of world-leading technology and services.

## Read the Docs

[docs.dataminesoftware.com](https://docs.dataminesoftware.com)

## Get in Touch

[www.dataminesoftware.com/contact](https://www.dataminesoftware.com/contact)

[www.dataminesoftware.com/support](https://www.dataminesoftware.com/support)

